



Butterfly Conservation

Lankham Bottom



Marsh Fritillary

Six-spot Burnet Moth



Marbled White: male & female

Marbled White: This species of high summer grasslands drops its eggs into the sward, the emerged caterpillars then carefully choose the right tufts of grass to feed on.

Marsh Fritillary is one of our most threatened species and this reserve is being managed to support the population stronghold in this part of the Dorset Downs. Its caterpillars spend most of the year, including winter, in groups inside their protective webs.

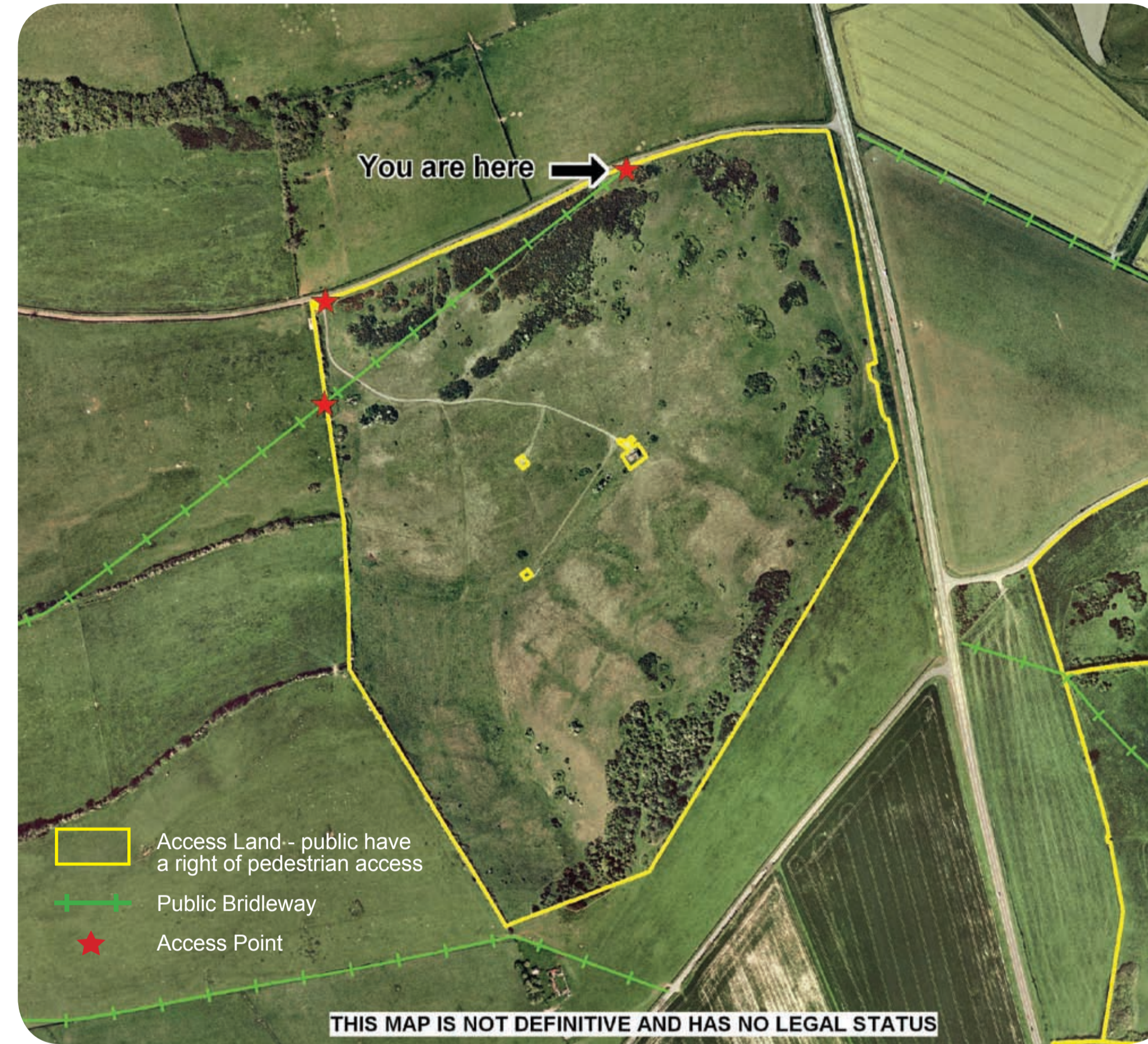
Chalkhill Blue: The caterpillars of this downland butterfly feed on Horse-shoe Vetch and are protected by ants.

Clouded Yellow: Migrants like this arrive from Europe each summer and seek out hot, sheltered slopes of wildflowers for nectar.

Wood Tiger: This striking day-flying moth has become very uncommon. Like many insects that spend the winter as larvae in the vegetation it can be affected by heavy grazing and cutting.

Small Heath Numbers of this once common and widespread little butterfly have declined greatly in our countryside. How it thrives on this site could help our understanding of its conservation needs.

The day-flying **Six-spot Burnet Moth** has brightly coloured caterpillars that feed on Bird's-foot Trefoil. From it they also collect the toxins that prevent birds from feeding



Access Land - public have a right of pedestrian access
Public Bridleway
Access Point

THIS MAP IS NOT DEFINITIVE AND HAS NO LEGAL STATUS



Chalkhill Blue



Wood Tiger

Lankham Bottom is a fine example of Dorset chalk downland and of great value for the wildlife it supports.

The land is a water catchment for the local public supply and so has not been ploughed or had fertilisers and herbicides applied.

The grassland therefore has a very rich mixture of grasses and flowers, and in turn these support a great variety of insect life.

Chalk grassland is one of the most important habitats for butterflies and moths in Britain, supporting the widest range of species, many of which are now rare and threatened.

Over 30 species of butterfly may be seen on this reserve through the year, including the rare and protected Marsh Fritillary.

Together with species such as the Grizzled Skipper and Chalkhill Blue they need a fairly short but flowery grass sward.

Light grazing with hardy beef cattle and a programme of scrub control is undertaken to provide and maintain the most suitable range of habitat conditions.

This reserve is owned by Wessex Water and managed by Butterfly Conservation for the benefit of its wildlife. BC welcomes new volunteers to help look after this reserve and other sites in Dorset.

For more information about Butterfly Conservation reserves and activities please visit our web-site at:

- www.butterfly-conservation.org
- www.dorsetbutterflies.com
- or telephone 01929 400209

The land is designated for public open access on foot and may be enjoyed according to the Countryside Code.

Please keep dogs under control and on leads near livestock.

Horse-riders please keep to the bridleway.

For more information about open access land please contact Dorset County Council on 01305 228677 or visit <http://www.dorsetforyou.com/>



Small Heath



Clouded Yellow

