

## Comparing Butterfly numbers at Alners Gorse 2005/2006

Here are some more questions for you to answer from information on the survey results sheets for 2005 and 2006.

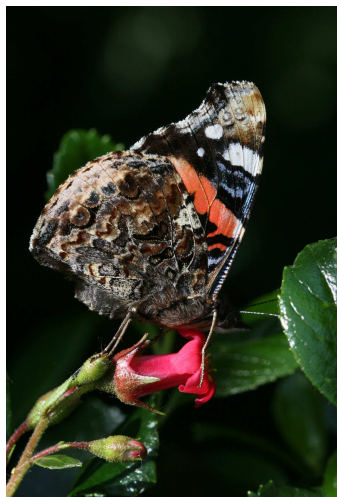
1. How many species of butterflies were seen on these walks in each of the two years?
2. Which is the commonest butterfly at Alners Gorse?
3. Find two species of butterflies that did much better in 2005 than in 2006.
4. Find two species that did much better in 2006 than 2005.
5. Which of the two years was generally better for butterflies at Alners Gorse?
6. Three species of butterflies found at Alners Gorse are migrants – they fly to Britain from the south to breed. Add up the totals for Red Admirals, Painted Ladies and Clouded Yellows in each year.
- 7.

Species	2005	2006	Total for the two years
Red Admiral	14	16	
Painted Lady	1	8	
Clouded Yellow	0	11	
Total for all 3 species			

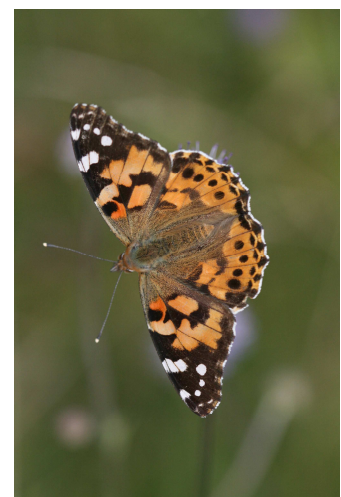
Which year was a better year for migrant butterflies? 2005 or 2006? .....



Clouded Yellow



Red Admiral  
(photos: David Dennis)



Painted Lady