

TABLE 1: SOUTH EAST ENGLAND REGIONAL CONSERVATION STRATEGY PRIORITY BUTTERFLIES

Common Name	Scientific Name	Ecological classification	Regional distribution and population trends (1990-2016) (* P<0.05; ** p<0.01; *** p<0.001)				GB Red List	W & C Act Schedule 5	UK BAP	England NERC s41	EU Red List	EU Habitats Directive Annex	Cons. Habitats & Species Regs.	BC UK Threat Priority 1997	BC UK Threat Priority 2005	BC UK Threat Priority 2016	BC UK Conservation Priority 2016	South East England RAP 2000	South Central England RAP 2000	Thames RAP 2000	South East England RCS Threat Priority 2016-25	South East England RCS Conservation Priority 2016-25
			1 km squares occupied in SE England (2005-2014)	Regional occupancy (% occupied 1km squares 2005-14)	Regional distribution trend (1990-2014)	Regional population trend (1990-2016)																
Wood White	<i>Leptidea sinapis</i>	HS	62	0.31	-78***					EN	P	X	X	M	M	H	A	H	H	H	H	A
Pearl-bordered Fritillary	<i>Boloria euphrosyne</i>	HS	116	0.59	-79***					EN	P	X	X	H	H	H	A	H	H		H	A
Small Pearl-bordered Fritillary	<i>Boloria selene</i>	HS	38	0.19						NT		X	X	M	H	H	B	H	H		H	A
Marsh Fritillary	<i>Eurodryas aurinia</i>	HS	29	0.15						VU	F	X	X	H	H	H	A		H	M	H	A
Glanville Fritillary	<i>Melitaea cinxia</i>	HS	83	0.42						EN	P	X	X	M	H	H	B		H		H	A
Heath Fritillary	<i>Mellicta athalia</i>	HS	26	0.13	-60*	73				EN	F	X	X	H	H	H	A	H			H	A
Duke of Burgundy	<i>Hamearis lucina</i>	HS	151	0.76	-60***	-51**				EN	P	X	X	M	H	H	A	H	H	M	H	A
Grayling	<i>Hipparchia semele</i>	HS	449	2.27	-52**	-69***				VU		X	X	L	H	H	B	M	M	M	H	B
Silver-studded Blue	<i>Plebejus argus</i>	HS	348	1.76	-75***	-4				VU	P	X	X	M	H	H	B	H	H	H	H	B
Adonis Blue	<i>Polyommatus bellargus</i>	HS	380	1.92	6	21				NT	P			M	M	L		H	H	H	H	B
Dingy Skipper	<i>Erynnis tages</i>	HS	916	4.63	-7	9				VU		X	X	L	H	H	B	M	M	M	M	C
Grizzled Skipper	<i>Pyrgus malvae</i>	HS	790	4.00	-10	-31				VU		X	X	M	H	H	B	H	H	M	M	C
Essex Skipper	<i>Thymelicus lineola</i>	WCS	2333	11.80	-31***	-89***								L	L	H	R				M	C
Silver-spotted Skipper	<i>Hesperia comma</i>	HS	298	1.51	-26	115**				NT	P			H	M	L		H	H	H	M	C
Wall	<i>Lasiommata megera</i>	WCS	795	4.02	-77***	-71***				NT		X	X	L	H	H	R	M	M	M	M	C
Dark Green Fritillary	<i>Argynnis aglaja</i>	HS	733	3.71	-6	105*								L	M	M		M			M	C
White Admiral	<i>Limenitis camilla</i>	HS	1452	7.35	8	-51*				VU		X	X	L	H	H	C		M		M	C
Purple Emperor	<i>Apatura iris</i>	HS	647	3.27	-64***	274***				NT	P			M	M	M		H	H	H	M	C
Brown Hairstreak	<i>Thecla betulae</i>	HS	717	3.63	94**	-76***				VU	P	X	X	M	H	M	C	H	H	H	M	C
White-letter Hairstreak	<i>Satyrium w-album</i>	WCS	451	2.28	-40	-95***				EN	P	X	X	M	H	H	C	M	M	M	M	C
Black Hairstreak	<i>Satyrium pruni</i>	HS	96	0.49						EN	P			M	M	H	C			H	M	C
Small Blue	<i>Cupido minimus</i>	HS	539	2.73	-43**	-45				NT	P	X	X	M	H	M	C	H	H	M	M	C
Chalk Hill Blue	<i>Polyommatus coridon</i>	HS	814	4.12	-47***	-19				NT	P			L	M	H	C	M	M		M	C
Small Skipper	<i>Thymelicus sylvestris</i>	WCS	4616	23.35	-25***	-87***								L	L	H					L	
Large Skipper	<i>Ochlodes sylvanus</i>	WCS	5228	26.45	-15	-28								L	L	L					L	
Small Heath	<i>Coenonympha pamphilus</i>	WCS	2661	13.46	-50***	-26						X	X	L	H	H	R				L	
Marbled White	<i>Melanargia galathea</i>	WCS	4137	20.93	5	4								L	L	L					L	
Silver-washed Fritillary	<i>Argynnis paphia</i>	HS	2279	11.53	126***	114**								L	L	L					L	
Brown Argus	<i>Aricia agestis</i>	WCS	2230	11.28	12	-20								L	L	L					L	

**Ecological classification:** HS = Habitat Specialist; WCS = Wider Countryside Species.  
**Distribution and population trends:** Red = meets criteria for High Priority status; Yellow = meets criteria for Medium Priority status. Note for some species timeline for calculating population trend is shorter than maximum 1990-2016.  
**GB Red List status:** CR = Critically Endangered; EN = Endangered; VU = Vulnerable; NT = Near Threatened.  
**Wildlife and Countryside Act (1981) status:** F = full protection; P = partial protection (sale only).  
**UK BAP and national legislative conservation status:** X = listed; E? = probably extinct.  
**BC UK Threat Priority:** H = High Priority; M = Medium Priority; L = Low Priority; R = Research.  
**BC UK Conservation Priority:** A = Action urgent across UK range; B = Action necessary in parts of UK range; C = Action necessary in parts of UK range but less urgent.  
**Regional Action Plan (RAP) Priority:** H = High Priority; M = Medium Priority.  
**Regional Conservation Strategy (RCS) Threat Priority:** H = High Priority; M = Medium Priority; L = Low Priority.  
**Regional Conservation Strategy (RCS) Conservation Priority:** A = Action urgent across all occupied landscapes/sites; B = Action necessary in some occupied landscapes/sites; C = Action less urgent regionally but may be necessary in some landscapes/sites.

**Explanation of proposed changes:**  
 Grayling: Relatively stable distribution on heaths; very vulnerable population on South Downs.  
 Silver-studded Blue: Increasing distribution in New Forest; stable on Wealden Greensands; significant drop in recorded distribution on Thames Basin Heaths and Ashdown Forest.  
 Adonis Blue: Generally increasing in distribution but still struggling in Chilterns and largely absent from Berkshire Downs. Remains a very significant species for the region.  
 Grizzled Skipper: Mixed fortunes; under-recorded but thought to be relatively stable on chalk sites, although not doing as well as Dingy Skipper.  
 Silver-spotted Skipper: Increasing distribution, strongly in some areas; still regionally very significant.  
 Purple Emperor: Expanding range across the region; some demonstrably good management that can be used to inspire more action.  
 Brown Hairstreak: Targetted searches (mainly egg searches) have shown that BH is distributed more widely than previously thought.  
 Black Hairstreak: Extensive recording suggests this population is probably stable or increasing, although this varies significantly between years.  
 Small Blue: Generally stable or increasing distribution across the region; recent conservation projects have demonstrated good management that can inspire further action.

TABLE 2: SOUTH EAST ENGLAND REGIONAL CONSERVATION STRATEGY PRIORITY MOTHS

Common Name	Scientific Name	ABH No.	B & F No.	W & C Act Schedule 5	UK BAP	England NERC s41	EU Habitats Directive Annex	Cons. Habitats & Species Regs.	BC Threat Priority 2016	BC Conservation Priority 2016	Thames RAP 2000	South-Central RAP 2000	South East RAP 2000	Upper Thames Priority 2016	Kent Priority 2016	Sussex Priority 2016	Hampshire & Isle of Wight Priority 2016	Surrey & South West London Priority 2016	South East of England RCS Threat Priority 2016-25	South East of England RCS Conservation Priority 2016-25
	<i>Stigmella zelleriella</i>	4.037	71		X	X			H	A					H				H	A
	<i>Phyllonorycter scabiosella</i>	15.077	355		X	X			H	B			M		H			H	H	A
	<i>Agonopterix atomella</i>	32.012	703		X	X			H	A		H/M					H		H	A
	<i>Agonopterix capreolella</i>	32.022	715		X	X			H	C		H/M					H	H	H	A
	<i>Depressaria olerella</i>	32.046	681									H/M					H	H	H	A
Large Gold Case-bearer	<i>Coleophora vibicella</i>	37.059	538		X	X			H	A		H/M				H	H		H	A
	<i>Coleophora ramosella</i>	37.094	558										M		H				H	A
Betony Case-bearer	<i>Coleophora wockeella</i>	37.109	527		X	X			H	A		H/M	M					H	H	A
	<i>Selania leplastriana</i>	49.346	1218									H/M	M		H				H	A
	<i>Grapholita gemmiferana</i>	49.353	1244									H/M					H		H	A
Fiery Clearwing	<i>Pyropteron chrysidiformis</i>	52.015	384	F	X	X			H	A			H		H				H	A
Forester	<i>Adscita stacies</i>	54.002	163		X	X			H	B		M		H	H	H	H	H	H	A
	<i>Sciota hostilis</i>	62.016	1447		X	X			H	B					H	H			H	A
	<i>Anania funebris</i>	63.024	1381		X	X			H	B		H/M	M		H	H		H	H	A
Bright Wave	<i>Idaea ochrata</i>	70.003	1696		X	X			H	A			H		H				H	A
Drab Looper	<i>Minoa murinata</i>	70.117	1878		X	X			H	B	H	H	H	H	H	H	H	H	H	A
Argent & Sable	<i>Rheumaptera hastata</i>	70.120	1787		X	X			H	B	H	H	H				H		H	A
Barberry Carpet	<i>Pareulype berberata</i>	70.124	1785	F	X	X			H	A	H	H			H				H	A
Barred Tooth-striped	<i>Trichopteryx polycommata</i>	70.201	1880		X	X			H	B	H	H	H		H		H	H	H	A
Sloe Carpet	<i>Aleucis distinctata</i>	70.281	1959		X	X			H	B	M	M	M	H		H	H	H	H	A
Black-veined Moth	<i>Siona lineata</i>	70.291	1966	F	X	X			H	A			H		H				H	A
Straw Belle	<i>Aspitates gilvaria</i>	70.293	1967		X	X			H	A			H		H			H	H	A
Sussex Emerald	<i>Thalera fimbrialis</i>	70.304	1672	F	X	X			H	A			H		H				H	A
Four-spotted	<i>Tyta luctuosa</i>	73.031	2465		X	X			H	B	H	H	H	H					H	A
Striped Lychnis	<i>Cucullia lychnitis</i>	73.057	2219		X	X			H	B	H	H	H	H		H	H		H	A
Shoulder-striped Clover	<i>Heliothis maritima</i>	73.073	2402		X	X			H	A			H				H	H	H	A
Reddish Buff	<i>Acosmetia caliginosa</i>	73.078	2393	F	X	X			H	A		H					H		H	A
Fisher's Estuarine Moth	<i>Gortyna borelii</i>	73.122	2365	F			2	2							H				H	A
Marsh Mallow Moth	<i>Hydraecia osseola</i>	73.125	2363		X	X			H	A			H		H	H			H	A
Heart Moth	<i>Dicycla oo</i>	73.218	2315		X	X			H	C	H	H	H	H	H	H			H	A
Pale Shining Brown	<i>Polia bombycina</i>	73.259	2148		X	X			H	C	H	H		H					H	A
Silvery Arches	<i>Polia hepatica</i>	73.260	2149								M	M	M	H		H	H	H	H	A
	<i>Bohemannia auriciliella</i>	4.073	33										M	H					H	B
	<i>Nemophora fasciella</i>	7.004	144		X	X			H	C		H/M	M		H		H	H	H	B
Currant Shoot Borer	<i>Lampronia capitella</i>	9.001	133		X	X			H	B		H/M	M	H	H			H	H	B
	<i>Bankesia conspurcatella</i>	11.007	178									H/M					H		H	B
	<i>Pachythelia villosella</i>	11.017	192									H/M					H		H	B
	<i>Oinophila v-flava</i>	12.046	277									H/M			H				H	B
	<i>Phyllonorycter sagitella</i>	15.088	366		X	X			H	B					H				H	B
	<i>Acrolepiopsis marcidella</i>	19.013	475									H/M	M				H		H	B
	<i>Tinagma balteolella</i>	26.002	399										M		H				H	B
	<i>Oecophora bractella</i>	28.021	651									H/M			H				H	B
	<i>Agonopterix putridella</i>	32.021	693										M		H				H	B
	<i>Syncopacma vinella</i>	35.006	846										M				H		H	B
	<i>Metzneria littorella</i>	35.057	723									H/M				H	H		H	B
	<i>Monochroa conspersella</i>	35.067	739												H				H	B
	<i>Neofriseria peliella</i>	35.087	798										M		H	H	H		H	B
	<i>Caryocolum blandulella</i>	35.136	835									H/M	M				H		H	B
	<i>Teleiodes flavimaculella</i>	35.144	774a													H			H	B
	<i>Coleophora calycotomella</i>	37.037	521a															H	H	B
	<i>Coleophora genistae</i>	37.041	546													H	H	H	H	B
	<i>Coleophora chalcogrammella</i>	37.045	528												H				H	B
	<i>Coleophora vibicigerella</i>	37.057	540										M		H				H	B
	<i>Coleophora ochrea</i>	37.060	531									H/M	M		H				H	B
	<i>Coleophora galbulipennella</i>	37.092	551										M		H	H			H	B
	<i>Coleophora linosyridella</i>	37.097	556.1										M		H				H	B
	<i>Scythris potentillella</i>	43.006	920															H	H	B
	<i>Scythris empetrella</i>	43.009	917									H/M					H	H	H	B
Goldenrod Plume	<i>Platyptilia calodactyla</i>	45.005	1500										M		H				H	B
Horehound Plume	<i>Wheeleria spilodactylus</i>	45.035	1515									H/M				H	H		H	B
	<i>Cochylidia subroseana</i>	49.130	958									H/M	M		H				H	B
Goat Moth	<i>Cossus cossus</i>	50.001	162		X	X			H	C	M	M	M	H		H	H	H	H	B
White-barred Clearwing	<i>Synanthedon spheciformis</i>	52.006	375								M	M	M	H					H	B
Sallow Clearwing	<i>Synanthedon flaviventris</i>	52.009	377								M	M	M	H					H	B
Currant Clearwing	<i>Synanthedon tipuliformis</i>	52.013	373								M	M	M	H					H	B

Scarce Forester	<i>Jordanita globulariae</i>	54.001	165							M	M		H		H	H	B					
Cistus Forester	<i>Adscita geryon</i>	54.003	164							M	M	M				H	H	B				
Five-spot Burnet	<i>Zygaena trifolii</i>	54.010	170												H		H	B				
	<i>Pempeliella ornatella</i>	62.014	1463								H/M	M		H			H	B				
	<i>Pima boisduvaliella</i>	62.019	1453									M		H			H	B				
	<i>Nyctegretis lineana</i>	62.051	1468									M		H			H	B				
	<i>Phlyctaenia stachydalis</i>	63.019	1384								H/M	M			H		H	B				
	<i>Anania verbascalis</i>	63.023	1382								H/M				H		H	B				
	<i>Paratalanta pandalis</i>	63.029	1373								H/M				H		H	B				
Beautiful Pearl	<i>Agrotera nemoralis</i>	63.041	1410		X	X			H	B		H/M	M		H	H	H	H	B			
	<i>Cynaeda dentalis</i>	63.056	1359									H/M	M				H	H	B			
	<i>Crambus uliginosellus</i>	63.083	1297									H/M				H		H	B			
Ground Lackey	<i>Malacosoma castrensis</i>	66.004	1635										H		H			H	B			
Small Eggar	<i>Eriogaster lanestris</i>	66.005	1633								M	M	M		H			H	B			
Dotted Border Wave	<i>Idea sivestraria</i>	69.001	1979								M				H			H	B			
Narrow-bordered Bee Hawk-moth	<i>Hemaris tityus</i>	69.008	1982		X	X			H	B			H		H		H	H	B			
Broad-bordered Bee Hawk-moth	<i>Hemaris fuciformis</i>	69.009	1983								H	M			H		H	H	B			
Sub-angled Wave	<i>Scopula nigropunctata</i>	70.020	1684												H		H	H	B			
Lace Border	<i>Scopula ornata</i>	70.021	1687										M		H		H	H	B			
Dingy Mocha	<i>Cyclophora pendularia</i>	70.030	1675		X	X			H	A			H				H		H	B		
False Mocha	<i>Cyclophora porata</i>	70.035	1679		X	X			H	C							H	H		H	B	
Chalk Carpet	<i>Scotopteryx bipunctaria</i>	70.043	1731		X	X			H	C		H	H	H		H				H	B	
V-Moth	<i>Macaria wauaria</i>	70.215	1897												H		H			H	B	
Large Thorn	<i>Ennomos autumnaria</i>	70.232	1911									M	M			H				H	B	
Ringed Carpet	<i>Cleora cinctaria</i>	70.263	1939								M	M					H			H	B	
Rest Harrow	<i>Aplasta ononaria</i>	70.296	1664		X	X			H	C				H		H				H	B	
Small Grass Emerald	<i>Chlorissa viridata</i>	70.306	1670									M	M				H	H		H	B	
Grass Emerald	<i>Pseudoterpna pruinata</i>	70.306	1665													H				H	B	
Pigmy Footman	<i>Eilema pygmaeola</i>	72.048	2046										H		H					H	B	
Dew Moth	<i>Setina irrorella</i>	72.050	2036									M	M			H		H		H	B	
Clay Fan-foot	<i>Paracolax tristalis</i>	72.051	2494		X	X			H	C			M	H		H		H	H	H	B	
Common Fan-foot	<i>Pechipogo strigilata</i>	72.056	2488		X	X			H	B		H		H		H	H	H	H	H	B	
Dark Crimson Underwing	<i>Catocala sponsa</i>	72.081	2455		X	X			H	C			H				H	H		H	B	
Light Crimson Underwing	<i>Catocala promissa</i>	72.082	2454		X	X			H	C		H	H				H			H	B	
Scarce Burnished Brass	<i>Diachrysis chryson</i>	73.011	2435									M	M		H			H		H	B	
Golden Plusia	<i>Polychrysis moneta</i>	73.014	2437													H				H	B	
Silver Barred	<i>Deltote bankiana</i>	73.027	2413										H				H			H	B	
Star-wort	<i>Cucullia asteris</i>	73.055	2217									M				H	H	H		H	B	
Sandhill Rustic	<i>Luperina nickerlii ssp. demuthi</i>	73.132	2354												H					H	B	
Blair's Wainscot	<i>Sedina buettneri</i>	73.135	2376										H				H			H	B	
Lyme Grass	<i>Longalatedes elymi</i>	73.138	2348													H				H	B	
Large Nutmeg	<i>Apamea anceps</i>	73.157	2333													H				H	B	
Crescent Striped	<i>Apamea oblonga</i>	73.161	2325									M	M			H				H	B	
Beautiful Gothic	<i>Leucochaena oditis</i>	73.178	2226										H				H			H	B	
Dusky Lemon Sallow	<i>Xanthia gilvago</i>	73.183	2275																H		H	B
Pale-lemon Sallow	<i>Cirrhia ocellaris</i>	73.184	2276									M				H		H	H		H	B
Lesser-spotted Pinion	<i>Cosmia affinis</i>	73.215	2316													H				H	B	
Beautiful Brocade	<i>Lacanobia contigua</i>	73.265	2156													H				H	B	
White Colon	<i>Sideridis turbida</i>	73.275	2152									M	M					H		H	B	
White Spot	<i>Hadena albimacula</i>	73.284	2172		X	X			H	C			H	H		H		H		H	B	
Double Line	<i>Mythimna turca</i>	73.288	2191											H				H		H	B	
Mathew's Wainscot	<i>Mythimna favicolor</i>	73.292	2200										M				H			H	B	
Shore Wainscot	<i>Mythimna litoralis</i>	73.299	2201										M					H		H	B	
Sand Dart	<i>Agrotis ripae</i>	73.323	2093										M	M			H	H		H	B	
Lunar Yellow Underwing	<i>Noctua orbona</i>	73.344	2108		X	X			H	B		H	H				H			H	B	

**Wildlife and Countryside Act (1981) status:** F = full protection; P = partial protection (sale only).

**UK BAP and national legislative conservation status:** X = listed; E? = probably extinct.

**BC UK Threat Priority:** H = High Priority; M = Medium Priority; L = Low Priority; R = Research.

**BC Conservation Priority:** A = Action urgent across UK range; B = Action less urgent across UK range, but may be required at the country/regional level;

C = Action less urgent, but may be required at the landscape/site level. Also includes species with poorly understood autecology.

**Regional Action Plan (RAP) Priority:** H = High Priority; M = Medium Priority.

**Branch Priority:** H = High Priority, based on comments from Mark Parsons; Tony Davis; Martin Harvey; Marc Botham; Colin Pratt; Paul Wheeler; David Gardner; Mike Wall; Francis Solly; Ian Hunter; Ian Ferguson.

**Regional Conservation Strategy (RCS) Threat Priority:** H = High Priority; M = Medium Priority; L = Low Priority.

**Regional Conservation Strategy (RCS) Conservation Priority:** A = Action urgent across all occupied landscapes/sites; B = Action necessary in some occupied landscapes/sites; C = Action less urgent regionally but may be necessary in some landscapes/sites.

FIGURE 1: SOUTH EAST ENGLAND REGIONAL CONSERVATION STRATEGY PRIORITY LANDSCAPES AND SITES MAP

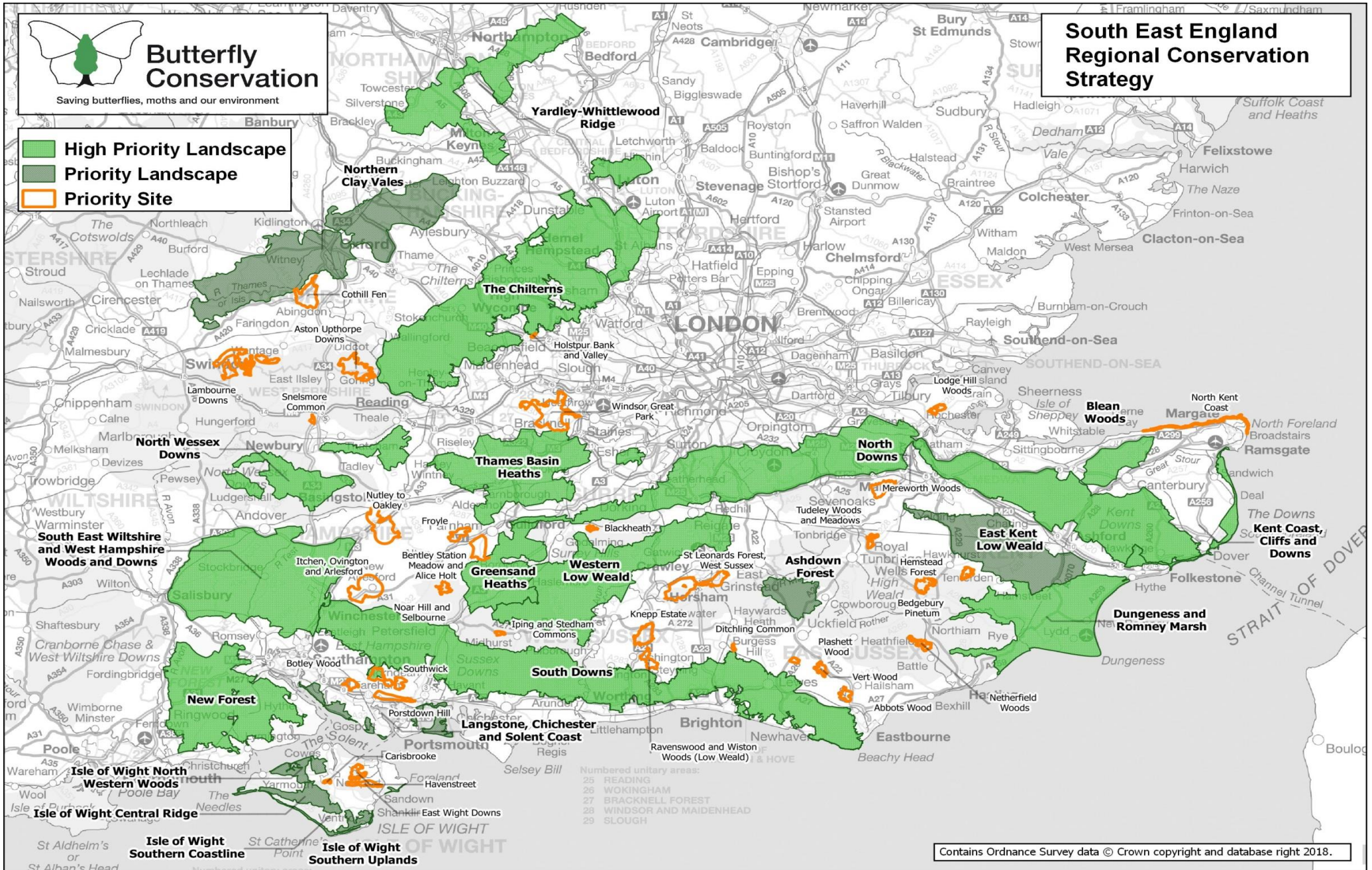


TABLE 3: SOUTH EAST ENGLAND REGIONAL CONSERVATION STRATEGY PRIORITY LANDSCAPES

Branch	Hampshire & IOW									U.Thames		Sussex			Surrey			Kent				
High Priority Landscape	X	X	X							X	X	X	X		X	X	X	X	X		X	X
Priority Landscape				X	X	X	X	X	X				X								X	
Landscape Number	113	114	102	115	116	117	118	119	120	67	70	121	122	123	124	125	126	126	127	128	129	130
Landscape Name	New Forest	North Wessex Downs	South East Wiltshire and West Hampshire Woods and Downs	Langstone, Chichester and Solent Coast	Isle of Wight North Western Woods	Isle of Wight Central Ridge	Isle of Wight Southern Uplands	Isle of Wight Southern Coastline	Northern Clay Vales	Yardley-Whittlewood Ridge (Whittlewood Forest)	The Chilterns (Scarps and Vales)	Greensand Heaths	South Downs	Asdown Forest	Thames Basin Heaths	Western Low Weald	North Downs (Surrey Downs)	North Downs (Kent Downs)	Blean Woods	East Kent Low Weald	Dungeness and Romney Marsh	Kent Coast, Cliffs and Downs
<b>High Priority Butterflies (Conservation Priority A)</b>																						
Wood White									H	H												
Pearl-bordered Fritillary			H									H				H						
Small Pearl-bordered Fritillary	H																					
Marsh Fritillary									H						H							
Glanville Fritillary				H	H	H		H														
Heath Fritillary																			H			
Duke of Burgundy		H	H								H	H					H					
<b>High Priority Butterflies (Conservation Priority B)</b>																						
Grayling	H			H		H	H					H	H		H						H	
Silver-studded Blue	H											H		H	H							
Adonis Blue		H	H			H	H				H		H			H	H				H	
<b>Medium Priority Butterflies</b>																						
Dingy Skipper	M	M	M			M	M			L	M	M	L		M	M	M	M		M	M	
Grizzled Skipper	H	M	M		M	H	H		M		L	H	M	M	H	H	M	M		M	M	
Silver-spotted Skipper			M								L		M				M	M			M	
Dark Green Fritillary	M	M	M			M	M		M		M		M				M	M			M	
White Admiral	L	L	L		L	L			M	L	L	L	L	L	L	L	L	L	L	M		
Purple Emperor			L						M	L	L	M	M	M	M	M	M	M		M		
Brown Hairstreak									M			M				M	M	M				
White-letter Hairstreak			M	M	M	M	M		M	M	M		M		M	M	L	L	H		L	
Black Hairstreak									M	M												
Small Blue	M	M	M			M	M				M	M		M		M	M				M	
Chalk Hill Blue	L		L			L	L				L	L				L	L				L	
<b>High Priority Moths (Conservation Priority A only)</b>																						
<i>Stigmella zelleriella</i>																					H	
<i>Phyllonorycter scabiosella</i>																	H	H			H	
<i>Agonopterix atomella</i>		H	H	H					H			H		H		H			H	H		
<i>Agonopterix capreolella</i>						H	H															
<i>Depressaria olerella</i>												H										
<i>Coleophora vibicella</i>				H	H																	
<i>Coleophora ramosella</i>																			H			
<i>Coleophora wockeella</i>																						
<i>Selania leplastriana</i>																					H	
<i>Grapholita gemmiferana</i>							H															
Fiery Clearwing																					H	
Forester			H						H	H			H			H						
<i>Sciota hostilis</i>																				H		
<i>Anania funebris</i>													H	H				H	H	H		
Bright Wave																					H	
Drab Looper													H		H	H		H	H			
Argent & Sable			H																			
Barberry Carpet									H													
Barred Tooth-striped			H								H		H				H	H				
Sloe Carpet	H															H				H		
Black-veined Moth																			H			
Straw Belle																	H	H				
Sussex Emerald																					H	
Four-spotted																					H	
Striped Lychnis		H	H								H		H									
Shoulder-striped Clover	H															H						
Reddish Buff					H																	
Fisher's Estuarine Moth																					H	
Marsh Mallow Moth																					H	
Heart Moth															H	H						
Pale Shining Brown									H													
Silvery Arches	H											H		H	H							
Total High Priority Butterflies	3	2	3	2	1	3	2	1	2	1	2	2	4	1	3	2	1	2	1	0	0	2
Total Medium Priority Butterflies	6	5	9	1	3	7	6	0	7	5	9	4	10	3	6	6	10	10	2	4	1	7
Total H Priority Moths (A only)	3	2	5	2	2	1	2	0	4	1	2	3	5	3	4	6	3	6	4	4	2	7
Total Priority Species	12	9	17	5	6	11	10	1	13	7	13	9	19	7	13	14	14	18	7	8	3	16

**Key to species status**  
 E Extinct  
 R Re/introduced  
 ? Status uncertain

**Key to conservation delivery progress**  
 Unknown  
 No conservation delivery: e.g. occasional recording of target species; target species monitored on few sites.  
 Limited conservation delivery: e.g. co-ordinated surveys undertaken enabling distribution of target species across the landscape to be mapped; co-ordinated monitoring undertaken across several sites, enabling assessment of target species abundance trends; management advice provided on some sites; recovery management implemented on some sites (e.g. work parties).  
 Full conservation delivery: e.g. co-ordinated monitoring programme established on many sites enabling assessment of target species abundance trend and effectiveness of conservation action; management advice given to landowners across whole site networks; co-ordinated programme of recovery management implemented across whole site networks; long-term sustainable management (e.g. agri-environment schemes) implemented across sites.

TABLE 4: SOUTH EAST ENGLAND REGIONAL CONSERVATION STRATEGY PRIORITY SITES

Branch	Hampshire & IOW											Upper Thames						Sussex						Su	Kent																			
Site Number	51	52	53	54	55	56	57	58	59	60	61	62	63	64	65	66	67	68	69	70	71	72	73	74	75	76	77	78	79	80	81	82	83											
Site Name	Noar Hill and Seibourne	Froyle	Nutley to Oakley	Bentley Station Meadow and Alice Holt	Itchen, Ovington and Arlesford	Southwick	Portsdown Hill	Botley Wood	Havenstreet	East Wight Downs	Carisbrooke	Lambourne Downs	Aston Uphorpe Downs	Windsor Great Park	Snelsmore Common	Cothill Fen	Holtspur Bank and Valley	St Leonards Forest, West Sussex	Iping and Stedham Commons	Ditchling Common	Knepp Estate	Ravenswood and Wisdon Woods (Low Weald)	Plashett Wood	Vert Wood	Abbots Wood	Netherfield Woods	Blackheath	Bedgebury Pinetum	Hemsted Forest	Tudeley Woods and Meadows	Mereworth Woods	Lodge Hill Woods	North Kent Coast											
<b>High Priority Butterflies (Conservation Priority A)</b>																																												
Pearl-bordered Fritillary								H														H	H	H	H	H																		
Small Pearl-bordered Fritillary																								H	H																			
Duke of Burgundy	H											H	H																											H				
<b>High Priority Butterflies (Conservation Priority B)</b>																																												
Grayling																																									H			
Silver-studded Blue																		H	H																					H				
Adonis Blue												H	H																															
<b>Medium Priority Butterflies</b>																																												
Dingy Skipper	M	M	M	M		M	M	H	M	M	M	M	M	M	M	M											M		M	M	M										M			
Grizzled Skipper	H	H	M	M		M		H	M	M	M	M	M	M	M	M		M	M	M	M	M	M	M	M	M	M	M	M	M	M	M	M	M	M	M	M	M	M	M	M			
Silver-spotted Skipper														M																														
Dark Green Fritillary	M	M	M	L	M			M				M	M								M																							
White Admiral	M	M	M	M	L	L		M	M				L								L	M	M	L	L																			
Purple Emperor	M	M	M	M	M			M						M	M	M					M																				M	M		
Brown Hairstreak	M																																									M		
White-letter Hairstreak	M	M	M	M	M			M	M				L	M																												M		
Small Blue	M	M	M		H			M	M			M	M	M																														
Chalk Hill Blue	M						M				M	M	L	L																														
<b>High Priority Moths (Conservation Priority A only)</b>																																												
<i>Agonopterix atomella</i>	H	H						H						H						H	H	H	H			H	H																	
Forester															H																													
<i>Anania funebris</i>																																											H	
Barred Tooth-striped																																												
Sloe Carpet																																												H
Striped Lychnis	H	H	H		H								H	H																														
Fisher's Estuarine Moth																																												H
Heart Moth														H																													H	H
Pale Shining Brown																																												
Silvery Arches															H																												H	H
<b>Grid Reference</b>	SU742319	SU750450	SU602482	SU798429	SU587333	SU637097	SU630066	SU541103	SZ549905	SZ597868	SZ488878	SU326769	SU544833	SU962703	SU461709	SU461993	SU917904	TQ218310	SU847219	TQ335185	TQ148204	TQ155159	TQ460156	TQ515142	TQ569076	TQ732185	TQ039460	TQ729330	TQ818357	TQ617425	TQ632549	TQ755739	TR252692											

Total High* Priority Butterflies	1	0	0	0	0	0	0	1	0	0	0	2	2	0	0	0	0	1	1	0	0	1	1	2	2	1	2	0	0	0	0	0	1	1	0	0	1	1			
Total Medium Priority Butterflies	9	7	7	6	5	5	3	7	4	3	4	5	8	3	4	5	5	1	1	4	5	3	3	3	2	2	1	3	3	3	3	3	3	3	4	0					
Total H Priority Moths (A only)	2	2	1	0	1	0	0	1	0	0	0	1	1	2	1	1	1	1	1	2	2	2	3	2	3	2	1	1	2	1	0	0	0	1							
Total Priority Species	12	9	8	6	6	5	3	9	4	3	4	8	11	5	5	6	6	3	3	6	7	6	7	7	7	5	4	4	5	4	3	5	2								

**Key to species status**  
 E Extinct  
 R Re/introduced  
 ? Status uncertain

**Key to conservation delivery progress**  
 Unknown  
 No conservation delivery: e.g. occasional recording and/or monitoring of target species.  
 Limited conservation delivery: e.g. co-ordinated monitoring enabling assessment of target species abundance trends; some management advice provided; some recovery management implemented.  
 Full conservation delivery: e.g. co-ordinated monitoring enabling assessment of target species abundance trends and effectiveness of conservation action; regular management advice provided; co-ordinated programme of recovery management implemented; long-term sustainable management (e.g. agri-environment schemes) implemented.

TABLE 5: SOUTH EAST ENGLAND REGIONAL CONSERVATION STRATEGY PRIORITY ACTIONS

Common Name	South East England RCS Threat Priority 2016-25			South East England RCS Conservation Priority 2016-25			South East England RCS Species Recovery Curve Stage			Survey	Monitoring	Research	Bespoke Management	Mosaic Management	Staff led	Input from staff	Volunteer led	Comment
	H	A	4	1	2	3	4	5										
<b>High and Medium Priority Butterflies</b>																		
Wood White	H	A	4									X						
Pearl-bordered Fritillary	H	A	4								X	X						Research autecology; climate change/nitrogen deposition; trial management; Bracken
Small Pearl-bordered Fritillary	H	A	3								X	X	X					Research autecology; climate change; mosaic management in part of range
Marsh Fritillary	H	A	4									X						
Glanville Fritillary	H	A	3/4									X	X					Stage 3 inland sites; trial management: calcareous grasslands
Heath Fritillary	H	A	3/4									X						
Duke of Burgundy	H	A	4									X						
Grayling	H	B	3									X	X	X				Research autecology; climate change; trial management; heathland
Silver-studded Blue	H	B	4									X	X					
Adonis Blue	H	B	5										X					
Dingy Skipper	M	C	3/4									X	X					Trial management: brownfields, woodland
Grizzled Skipper	M	C	3/4									X	X					Trial management: brownfields
Essex Skipper	M	C	2									X	X					Research causes of decline
Silver-spotted Skipper	M	C	5										X					
Wall	M	C	2									X	X					Research causes of decline
Dark Green Fritillary	M	C	4										X					
White Admiral	M	C	2									X	X					Research autecology; climate change; trial management: woodland
Purple Emperor	M	C	4										X					
Brown Hairstreak	M	C	4										X	X				
White-letter Hairstreak	M	C	3	X	X	X	X	X										Data deficient
Black Hairstreak	M	C	4										X					
Small Blue	M	C	4											X				
Chalk Hill Blue	M	C	2/4									X	X					Research causes of decline in parts of range
<b>High Priority Moths (Conservation Priority A only)</b>																		
<i>Stigmella zelleriella</i>	H	A	2	X	X	X	X	X						S				Increase survey effort; autecological research; liaise with site managers
<i>Phyllonorycter scabiosella</i>	H	A	2	X	X	X	X	X						S				Increase survey effort; autecological research; liaise with site managers
<i>Agonopterix atomella</i>	H	A	3	X	X	X	X	X						S				Increase survey effort; autecological research; liaise with site managers to maintain plentiful supply of Dyer's Greenweed
<i>Agonopterix capreolella</i>	H	A	1	X									X					Establish if still resident on Isle of Wight and in Surrey (Pewley and Merrow Downs)
<i>Depressaria olerella</i>	H	A	1	X									X		V			Establish if still extant in region
<i>Coleophora vibicella</i>	H	A	3		X	X	X	X						S				Survey all extant sites; maintain annual monitoring; liaise with site managers and encourage appropriate management
<i>Coleophora ramosella</i>	H	A	1	X	X	X	X	X							V			Establish if still extant in region; autecological research; liaise with site managers
<i>Coleophora wockeella</i>	H	A	4		X			X						S				Maintain annual monitoring; liaise with site manager to ensure appropriate management
<i>Selania leplastriana</i>	H	A	2	X	X			X							V			Increase survey effort; liaise with site managers
<i>Grapholita gemmiferana</i>	H	A	1	X	X			X							V			Increase survey effort; ensure known sites surveyed minimum every three years; liaise with site managers
Fiery Clearwing	H	A	3/4	X	X			X	X					S				Survey all extant sites annually; monitor (egg counts) sample of sites annually; liaise with site managers to ensure appropriate management
Forester	H	A	2	X	X	X	X	X						S	V			Increase survey effort to determine status and distribution in the region; liaise with site managers
<i>Sciota hostilis</i>	H	A	2	X	X			X						S				Maintain survey effort (min. every 2-3 years); liaise with site managers to encourage plentiful supply of Aspen in a range of age classes; autecological research
<i>Anania funebris</i>	H	A	4	X	X			X	X					S	V			Survey all extant sites every three years; encourage survey at potential sites; liaise with site managers and encourage management
Bright Wave	H	A	4		X			X	X					S				Maintain established monitoring programme; liaise with site managers and encourage management
Drab Looper	H	A	4	X	X			X	X					S				Survey all extant sites every three years; encourage survey at potential sites; liaise with site managers to maintain annual supply of Wood Spurge
Argent & Sable	H	A	3/4	X	X			X	X					S				Survey all extant sites annually; liaise with site managers
Barberry Carpet	H	A	4	X	X			X						S				Maintain annual monitoring of extant sites (species, site condition); Barberry planting has taken place at some sites; liaise with site owners/managers; survey potential sites or planted sites on a regular basis
Barred Tooth-striped	H	A	3	X	X	X	X	X						S	V			Increase survey effort to establish regional status & distribution; autecological research; liaise with site managers
Sloe Carpet	H	A	2	X	X	X		X						S	V			Increase survey effort to establish regional status & distribution; autecological research; liaise with site owners/managers
Black-veined Moth	H	A	4		X	X	X							S				Maintain established monitoring programme; liaise with site managers/interested parties
Straw Belle	H	A	3	X	X	X	X							S				Extend annual survey to all extant sites; extend structured annual monitoring (timed counts/transects) to six min. sites; liaise with site managers
Sussex Emerald	H	A	4	X	X	X	X							S				Maintain established monitoring programme; undertake survey of potential sites; liaise with site managers/interested parties
Four-spotted	H	A	2	X	X	X	X								V			Increase survey effort to establish regional status & distribution; establish structured annual monitoring (timed counts, where found)
Striped Lychnis	H	A	4	X	X	X	X							S	V			Increase annual survey effort; establish annual monitoring (larval counts/flowering spike nos.); encourage habitat creation (e.g. gardens); liaise with site managers
Shoulder-striped Clover	H	A	3	X	X	X	X							S				Increase survey effort and establish status & distribution in Surrey; extend annual survey to all extant sites; encourage autecological research
Reddish Buff	H	A	4		X			X						X	S	V		Current effort largely co-ordinated through NE/Hants IoWWT; encourage recording in conjunction with existing partnership; liaise with site managers/interested parties
Fisher's Estuarine Moth	H	A	4	X	X	X	X							X	V			Current effort led by NE; extend monitoring to extant sites in North Kent; liaise with site managers/interested parties
Marsh Mallow Moth	H	A	4	X	X			X						S				Maintain monitoring programme on Romney Marsh & extend to Medway sites; habitat creation on Romney Marsh
Heart Moth	H	A	2	X	X			X							V			Survey all known sites every two to three years; extend survey to potential sites; liaise with site managers
Pale Shining Brown	H	A	2	X	X			X							V			Increase survey effort to establish regional status & distribution; survey all extant sites min. every three years; autecological research; liaise with site managers
Silvery Arches	H	A	1	X	X			X							V			Increase survey effort to establish regional status & distribution; survey all extant sites min. every three years; autecological research

**Species Recovery Curve Stages:** 1 Status assessment; 2 Diagnosis; 3 Solution testing; 4 Recovery management; 5 Sustainable management.  
**Survey:** Improved surveying requiring to assess range and distribution trends.  
**Monitoring:** Improved monitoring required to assess population trends.  
**Research:** To improve autecological knowledge, identify causes of decline and assess potential habitat management solutions.  
**Bespoke management:** Habitat management tailored to meet specific ecological requirements of the target species.  
**Mosaic management:** Generic or best practice habitat management which integrates the ecological requirements of a suite of species.